



BJA
Bureau of Justice Assistance
U.S. Department of Justice



the NATIONAL REENTRY
RESOURCE CENTER

Second Chance Act Orientation Webinar for FY 2016 Comprehensive Community-Based Adult Reentry Program Utilizing Mentors

December 13, 2016

Brought to you by the National Reentry Resource Center and Bureau of Justice Assistance



Speakers

Andre Bethea, Policy Advisor - Corrections

BUREAU OF JUSTICE ASSISTANCE, U.S. DEPARTMENT OF JUSTICE

**Ronin A. Davis, Grantee Technical Assistance Manager,
Corrections & Reentry**

THE COUNCIL OF STATE GOVERNMENTS JUSTICE CENTER

Jan De la Cruz, Policy Analyst, Corrections & Reentry

THE COUNCIL OF STATE GOVERNMENTS JUSTICE CENTER

Maureen Richey, Policy Analyst, Corrections & Reentry

THE COUNCIL OF STATE GOVERNMENTS JUSTICE CENTER

Agenda

01 Introductions

02 FY16 Grantees

03 Grant Program
Overview

04 Grantee Support

05 Q&A

Agenda

01

Introductions

02

FY16 Grantees

03

Grant Program
Overview

04

Grantee Support

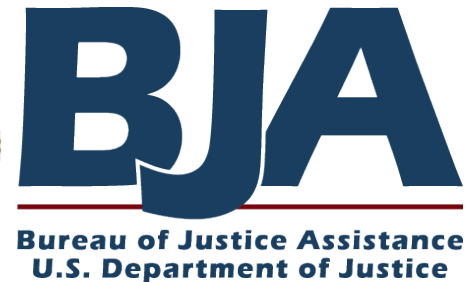
05

Q&A

Bureau of Justice Assistance

Mission: to provide leadership and services in grant administration and criminal justice policy development to support local, state, and tribal justice strategies to achieve safer communities.

The Second Chance Act has supported over **\$300 million** in reentry investments across the country



<https://www.bja.gov/>

Bureau of Justice Assistance

BJA's Justice Today

BUREAU OF JUSTICE ASSISTANCE • OFFICE OF JUSTICE PROGRAMS

DENISE E. O'DONNELL, DIRECTOR

September 2016

In the Spotlight

BJA Hosts Smart Suite Summit

On September 7–9, BJA hosted the Smart Suite Summit, "Transforming Criminal Justice through Research and Innovation," in Arlington, Va. The summit gathered more than 400 Smart Suite grantees, researchers, national experts, federal representatives, and thought leaders to discuss and promote data- and research-informed criminal justice policy and programs.



Four years ago, BJA launched Smart Policing, the first of the Smart Suite programs designed to employ practitioner-researcher partnerships to bring more science to criminal justice operations by building partnerships that utilize evidence-based and data-driven strategies to reduce crime, improve community safety, reduce recidivism, and prevent unnecessary confinement. The BJA Smart Suite now includes more than 10 programs and has worked with researchers and practitioners in over 200 jurisdictions on topics such as policing, corrections, community-based efforts, prosecution, and defense. This approach has netted remarkable results that are driving reform in these critical criminal justice areas.

For more information on BJA's Smart Suite or to download presentations and resources from the summit, visit the Smart Suite [web page](#).

DID YOU KNOW?

Updates to State and Territory Fact Sheets

BJA recently completed annual updates to its State and Territory Fact Sheets for fiscal year (FY) 2014. Each fact sheet summarizes funding provided by BJA during FY 2014 across all jurisdictions in a particular state or territory, as well as state- or territory-specific statistics on justice personnel and crime/arrest data during the fiscal year. These reports can be accessed [here](#) and downloaded as printable PDFs.

FEATURED PROGRAM

Annual VRN Summit Held

On September 26–28, U.S. Attorney General Loretta E. Lynch, OJP Assistant Attorney General Karol Mason, BJA Deputy Director Kristen Mahoney, and BJA Policy Office staff attended the fourth



www.bja.gov



@DOJBJA



BJA

Bureau of Justice Assistance
U.S. Department of Justice

The Council of State Governments Justice Center

- National non-profit, non-partisan membership association of state government officials
- Engages members of all three branches of state government
- Justice Center provides practical, non-partisan advice informed by the best available evidence



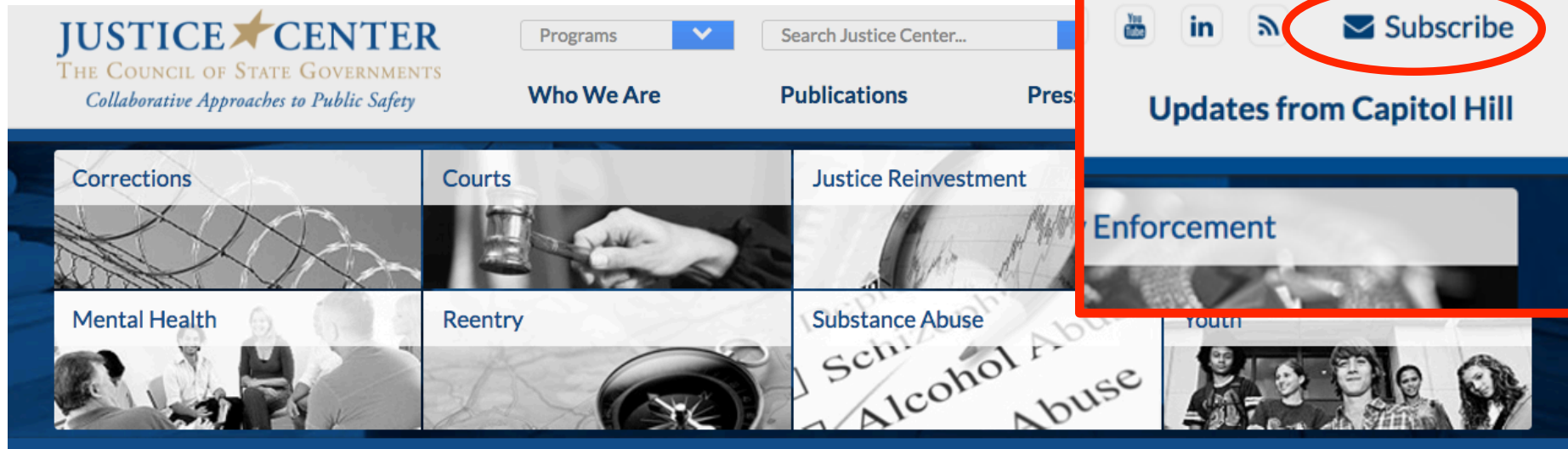
National Reentry Resource Center

- Authorized by the passage of the Second Chance Act in April 2008 and launched by the Council of State Governments in October 2009
- NRRC staff have worked with nearly 600 SCA grantees, including 40 state corrections agencies.
- The NRRC provides individualized, intensive, and targeted technical assistance training and distance learning to support SCA grantees.

nationalreentryresourcecenter.org



National Reentry Resource Center



Understanding the FBI Crime Report

Mike Lawlor and John Wetzel (right), the CSG Justice Center's Executive Board chair and vice chair, provide context for understanding the FBI Crime Report.



HIGHLIGHTS

- In San Francisco and Beyond, Homeless Crisis Should Not Derail Progress on Mental Illness
- PBS Newshour: Breaking the School-To-Prison Pipeline for Young Offenders One Class at a Time
- Opinion: How Federal Investments

Agenda

01 Introductions

02 FY16 Grantees

03 Grant Program
Overview

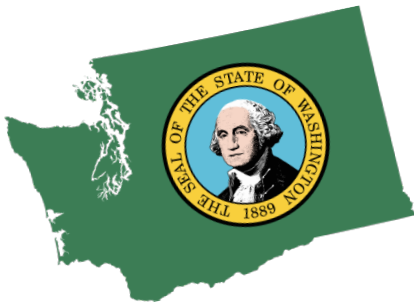
04 Grantee Support

05 Q&A

FY16 Adult Mentoring Grantees



FY16 Adult Mentoring Grantees



Transition to Trust Program

- Target pop: Male & female veterans
- Working in 4 prisons and 2 work release facilities
- One-to-one mentoring
- Contracting with Goodwill for mentor recruitment, training, & matching
- Control group

FY16 Adult Mentoring Grantees

#CoachTORI



- Target pop: Males and females
- One-on-one mentoring
- Workforce development
- Access to health care



FY16 Adult Mentoring Grantees

TYRO



- Target pop: Male father figures
- Alumni community
- Group mentoring
- Mobile app
- TYRO suite (fatherhood, relationship, & employment/job skills classes)
- Control group

FY16 Adult Mentoring Grantees

I-CAN Mentoring



- Target pop: Males & Females
- Paid mentors (part-time employees)
- Individual and group mentoring
- Soft and hard skills trainings
- Extension of existing discharge planning program

FY16 Adult Mentoring Grantees

Memphis CAMP



- Target pop: Males and females who have completed or are enrolled in a cognitive restructuring program
- Special focus on veterans
- Individual and group mentoring



Agenda

01 Introductions

02 FY16 Grantees

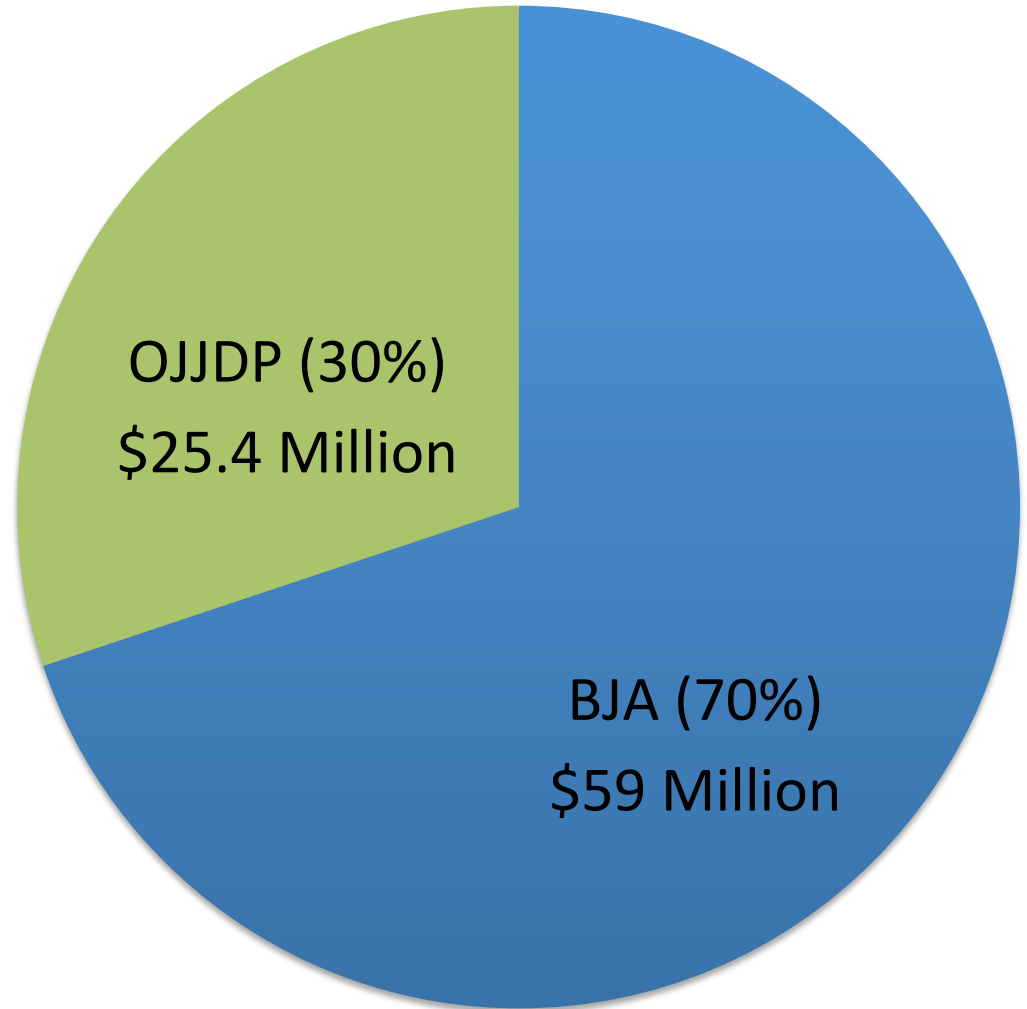
03 Grant Program
Overview

04 Grantee Support

05 Q&A

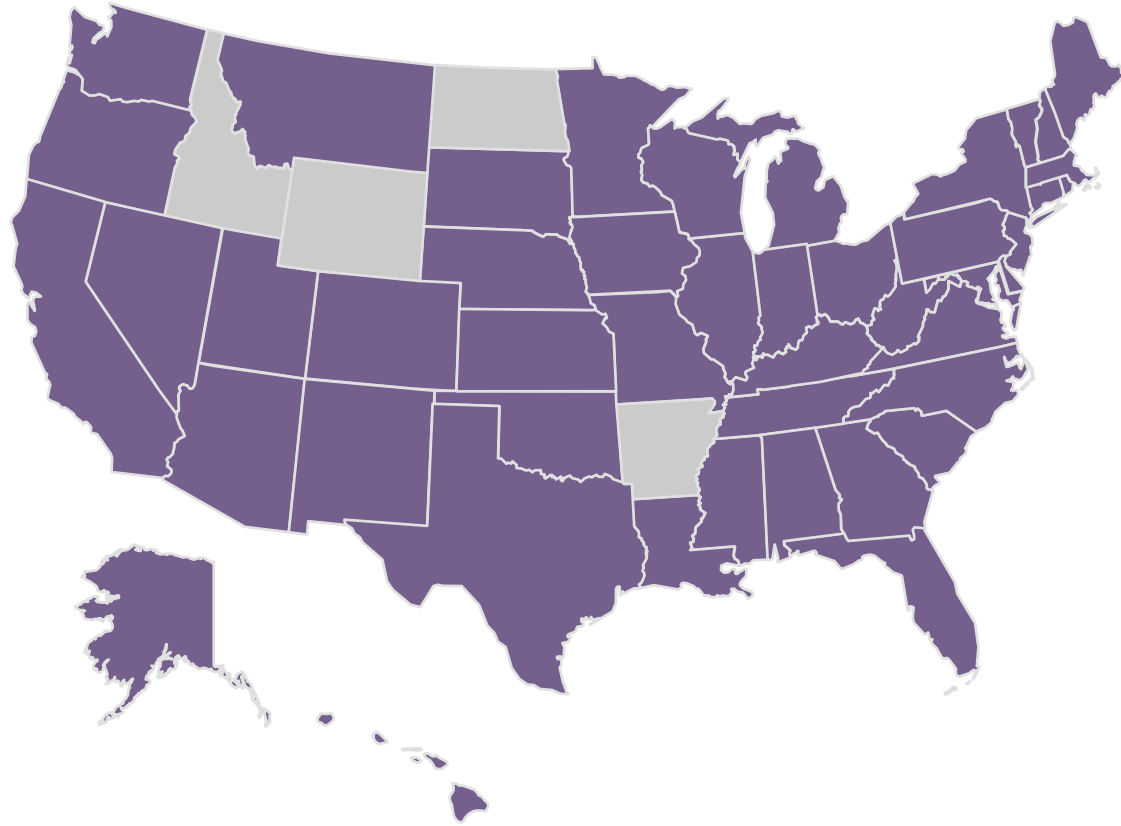
SCA Mentoring Programs

Since **2009** the Department of Justice has awarded around **\$85** million in Second Chance Act mentoring funding to over **180** nonprofit community and faith-based organizations.



SCA Mentoring Programs

Since **2009** the Department of Justice has made **220** Second Chance Act mentoring awards to nonprofit organizations in **46** states and the District of Columbia.



SCA Mentoring Programs



Technology Bridges Distances for a Reentry Program in Western Wisconsin

November 8, 2016

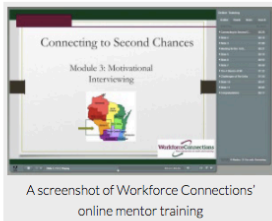
By Maureen Richey, CSG Justice Center

This is the second feature in **Tech and Reentry**, a series profiling organizations in the field of corrections and reentry that are using various forms of technology to improve participant engagement, streamline service delivery, and enlist volunteers.

Low recruitment numbers. Poor attendance. Lackluster quarterly reports. These are concerns that burden many nonprofit, community-based outreach programs around the country. However, for **Workforce Connections Inc.**, an organization that serves people returning to their communities from incarceration in western Wisconsin, these problems were heightened by the rural and semi-rural environments from which the organization draws both participants and volunteers. Workforce Connections found ways to tackle these issues specifically in the delivery of their mentoring services.

Workforce Connections' reentry mentoring program, **Connections to Success**—a 2014 Second Chance Act mentoring grant recipient—serves men and women returning to an eight-county catchment area from both local jails and state prisons. The total population of the entire eight-county area is only roughly 310,000 people spread out over more than 6,000 square miles, which makes access to crucial reentry resources significantly more difficult than it would be in more populous urban areas like Madison or Milwaukee.

In addition to their focus on employment success, Workforce Connections also offers education and



A screenshot of Workforce Connections' online mentor training



Second Chance Act Grantee Achieves Dramatic Results for High-Risk Women

February 17, 2016

By Maureen Richey, the CSG Justice Center



Graduates of the Family Pathfinders adult mentoring program.

explained.

Jones helps the women view their criminal histories through a different lens, hoping to convince them of the value in each of their lives.

"I always tell [my clients], 'You are not a felon. You are a woman who happens to have a felony in her background.'"

Unemployment, substance use, and mental health needs are just some of the barriers to successful reentry from incarceration that the women in Tarrant County's IDT program face. Despite these challenges, a group of 70 of those women who enrolled in Family Pathfinders' **adult reentry mentoring** pilot program recidivated at a much lower rate than anticipated. Although women in Tarrant County's IDT program historically recidivate at a rate of 50 percent or higher, less than 15 percent of women enrolled in the mentoring pilot program reoffended over a two-year period.

An award-winning family services nonprofit organization, **Family Pathfinders** has provided adult mentoring services for more than 18 years. After receiving Second Chance Act Adult Mentoring

When Toby Jones first meets her clients, she finds that many of them are shocked that someone wants to help them. Jones is the mentoring program director for Family Pathfinders of Tarrant County in Fort Worth, Texas, where she serves women in Tarrant County Jail's Intensive Day Treatment (IDT) program for substance use.

"When they hear that our mentors are all volunteers, client after client will ask, 'Why would somebody want to come meet with me? I'm just a felon,'" Jones



Second Chance Act Mentoring Grantee Receives National Criminal Justice Program Award

November 2, 2016

By Chidi Umez, CSG Justice Center

The Connection Inc., a Connecticut-based nonprofit organization, was one of five organizations in the country to receive the 2016 Outstanding Criminal Justice Program Award from the **National Criminal Justice Association** (NCJA) for its Re-Entry Assisted Community Housing (REACH) and Re-Entry Assisted Community Housing and Mentoring (REACH-M) programs. According to NCJA, these awards are an opportunity to honor innovative criminal justice programs with proven effectiveness.

The REACH program seeks to reduce recidivism by offering transitional housing and case management services to people returning to their communities from incarceration. REACH currently provides temporary housing to men and women ages 18 and above who are on parole or probation in various towns and cities in Connecticut. Clients are referred to REACH through the State of Connecticut Department of Correction and the Court Support Services Division of the state's judicial branch. Program clients work with a REACH case manager to develop an individualized reentry and treatment plan, which includes goals such as finding stable housing, gaining employment, and reestablishing natural supports in their community.

The Connection received a 2014 Second Chance Act grant to support REACH-M, a pilot randomized control trial that incorporates peer mentors who provide pre- and post-release support to clients. Peer mentors use their own experiences of incarceration and successful reentry to work with REACH case managers and help clients develop reentry and treatment plans.



From left, Chris Kervick of NCJA, Jacob Hasson of The Connection, Patrick Fallon of The Connection, Khariton Moore of the NCJA

Purpose of the Grant Program

Goal :

To promote more effective and successful reentry for formerly incarcerated individuals through the utilization of comprehensive, evidence-based wrap-around reentry plans that address the identified needs of the individuals and are supported by trained mentors

Grant Program Expectations

Target Population:

- Medium- to high-risk as determined by a validated criminogenic risk and needs assessment
- Must be confined at the time of enrollment
- Must be 18 or older and convicted as an adult



Grant Program Expectations

- Partnership with corrections agency and facility
- Clear policies & procedures outlining mentoring component
- Pre- and in-service mentor training
- Ongoing data collection
- Pre/post-release case planning
- Comprehensive post-release services
- Program evaluation*

Grant Program Expectations

- Grantees will receive **intensive technical assistance** (TA) to support the development of a **Planning and Implementation Guide** (P&I Guide).
- The P&I Guide will assist each grantee in **developing and refining a strategic program plan** that incorporates evidence-based programs, policies, and best practices.
- The P&I Guide will assist in **building capacity, identifying strengths** and areas that need improvement, flushing out ideas and **refining concepts** cursorily addressed in program proposal, and **targeting TA**.

Agenda

01 Introductions

02 FY16 Grantees

03 Grant Program
Overview

04 Grantee Support

05 Q&A

Grantee Support



- Funder
- State policy advisor
- Grant management (budget and scope adjustments)



- Contracted through DOJ
- Training and technical assistance
- Programmatic support (monthly calls, site visits, etc.)



- Contracted through DOJ
- Performance measurement tool

NRRC Technical Assistance Overview

Your designated NRRC Technical Assistance Lead will provide and coordinate support in several areas, including:

- ✓ Completion of the P&I Guide
- ✓ Identifying measures and strategies to track progress
- ✓ Content and facilitation support
- ✓ Supporting the development of implementation & sustainability plans
- ✓ Sharing successes with stakeholders, the field, other grantees, and the press

NRRC & BJA Contacts

Grantee	TA Lead	State Policy Advisor
WestCare Washington	Jan De la Cruz jdelacruz@csg.org	Tracey Willis tracey.willis@usdoj.gov
Texas Offenders Reentry Initiative (MEDC)		
The RIDGE Project		
The Fortune Society		
WestCare Washington		
Memphis Leadership Foundation	Maureen Richey mrichy@csg.org	

NRRC Technical Assistance Activities



P&I Guide Goals

- Establishes baseline program information
- Highlights and explores grantee strengths
- Identifies challenges or opportunities for development
- Helps the TA provider target assistance
- Aids the grantee in focusing on areas of need
- Provides a single document to reference key programmatic information
- Enables ideas and best practices to be exchanged

P&I Guide Process

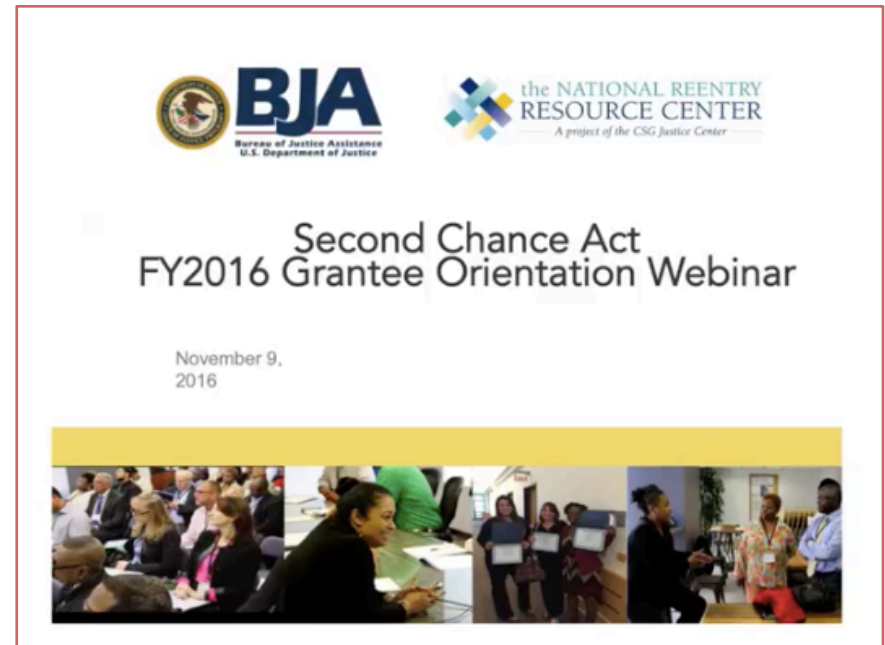
- Work with stakeholders & partners to complete the P&I Guide in phases
 - Be honest and accurate and concise
 - Clearly specify what is ready to be implemented versus what is in the works
- Fill out exercises prior to NRRC monthly calls
 - Send exercises to TA provider prior to calls
 - TA provider will provide feedback and discuss exercises on calls
 - Update the exercises as changes occur

P&I Guide Sections

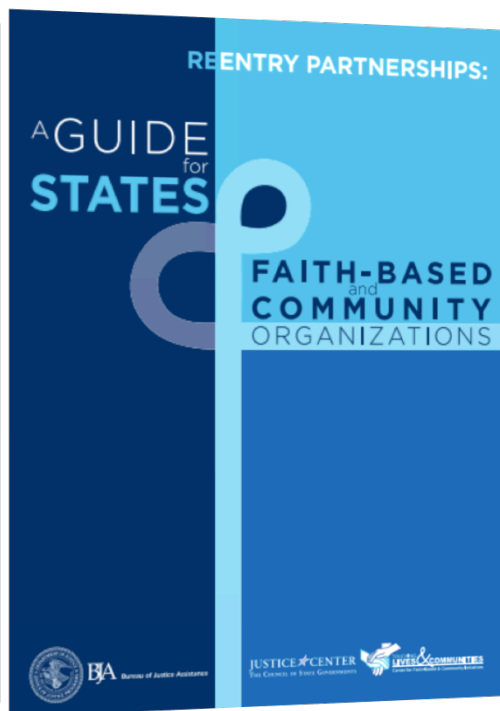
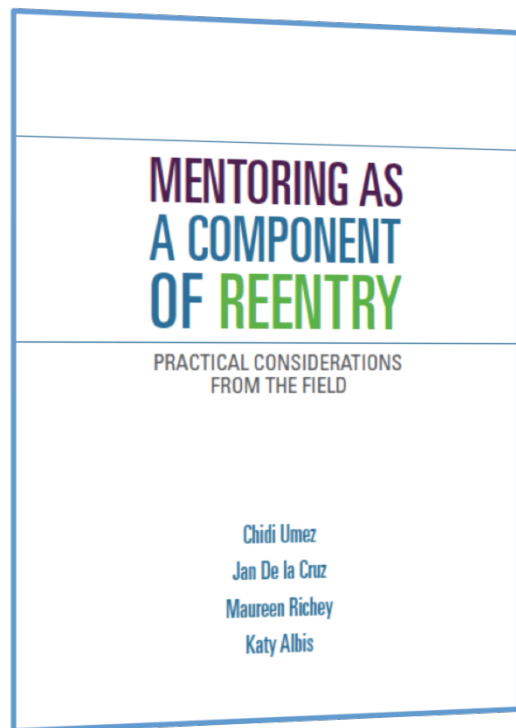
- Section 1: Getting Started and Identifying Goals
- Section 2: Defining or Refining Your Target Population
- Section 3: Service Provision and Support
- Section 4: Mentoring Services
- Section 5: Data Collection, Performance Measurement, and Program Evaluation
- Section 6: Sustainability
- Appendix A: Supporting Resources

Next Steps for TA

- Review Second Chance Act FY2016 Grantee Orientation Webinar
- Introductory call with TA lead
 - TA leads have reached out to schedule these
- Working collaboratively on P&I Guide



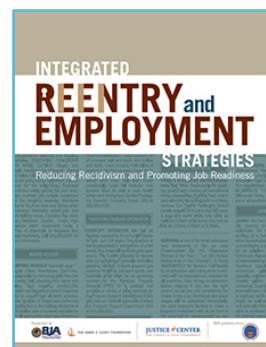
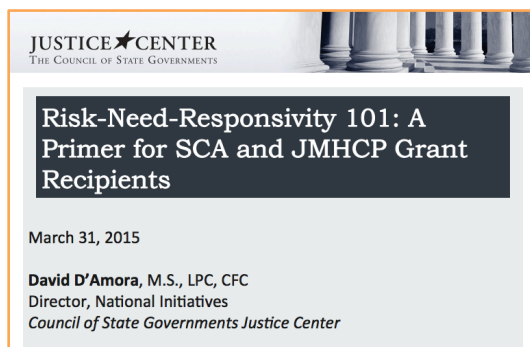
NRRC Resources



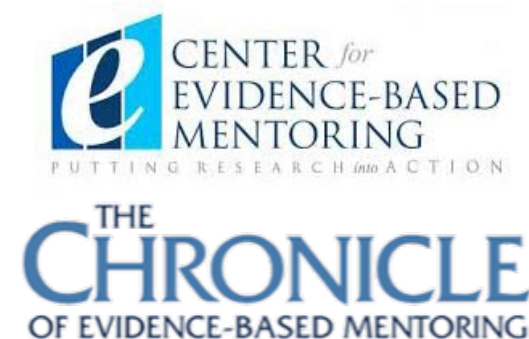
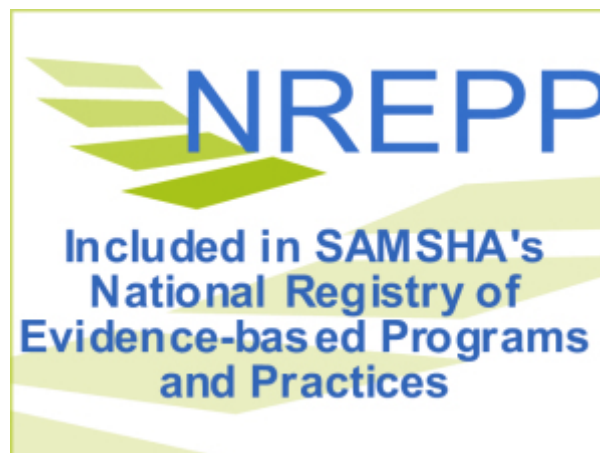
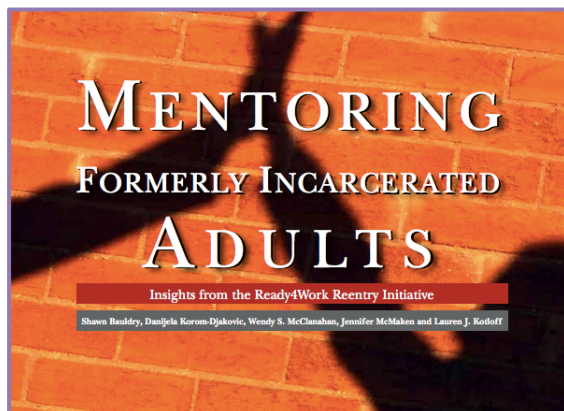
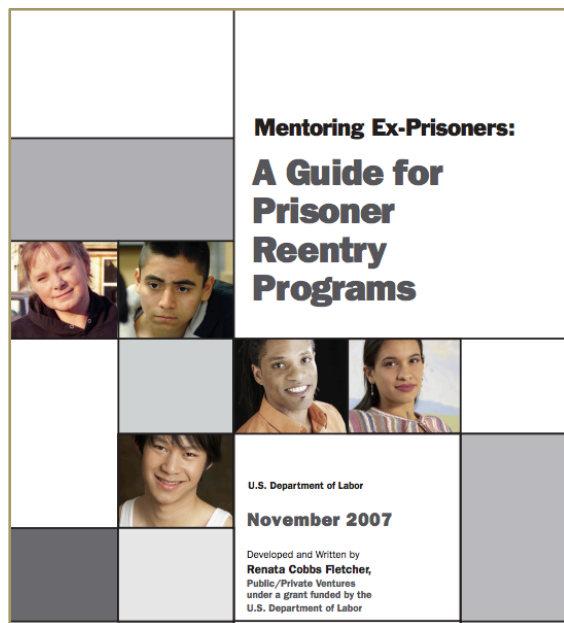
Planning for Sustainability: Supporting Community Based Reentry Programs

NOVEMBER 30, 2016

This webinar discusses strategies and recommendations for sustaining reentry programs initiated by community-based organizations. With a particular focus on programs that incorporate mentors, presenters discuss how to consider sustainability throughout the program-development process beginning in the planning phase. Topics include leveraging multiple funding streams from public and private sources, asset mapping, and how to build an agency's profile in the field and community.



Additional Resources



Agenda

01 Introductions

02 FY16 Grantees

03 Grant Program
Overview

04 Grantee Support

05 Q&A

Q&A

Contact Information

Bureau of Justice Assistance

Andre Bethea

Policy Advisor - Corrections

Andre.Bethea@usdoj.gov | 202.353.0583

The Council of State Governments Justice Center

Ronin A. Davis

Grantee Technical Assistance Manager

rdavis@csg.org | 646.383.5760

Jan De la Cruz, Policy Analyst

jdelacruz@csg.org | 646.356.0053

Maureen Richey, Policy Analyst

mrichey@csg.org | 646.356.0051





the NATIONAL REENTRY RESOURCE CENTER

Thank You

Join our distribution list to receive
National Reentry Resource Center updates!

csgjusticecenter.org/subscribe

info@nationalreentryresourcecenter.org